

NOTICE TO COMPETITORS No.4

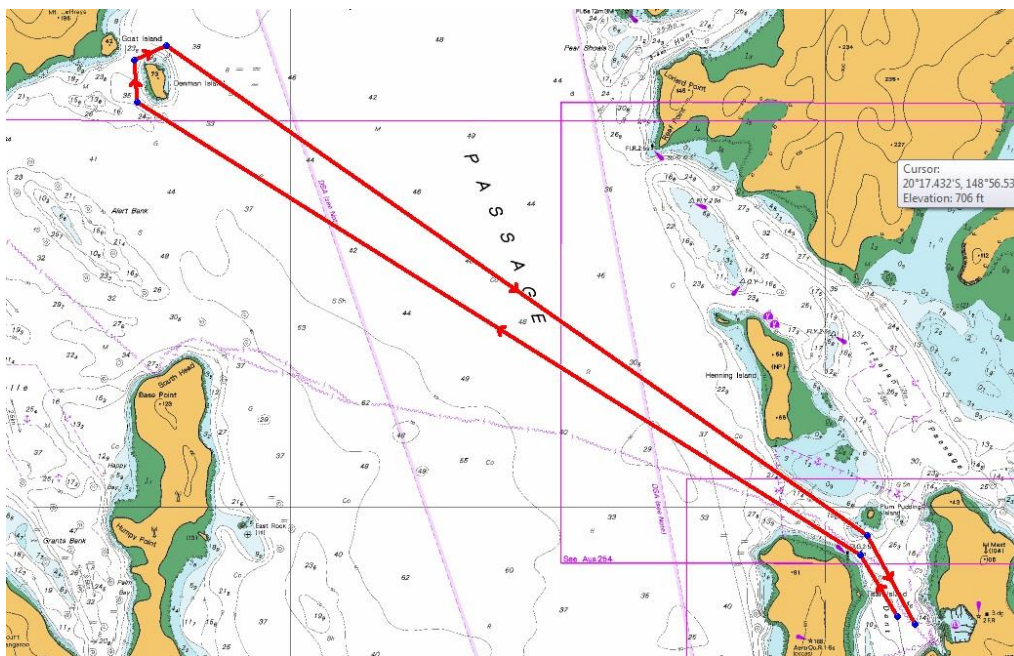
Amendment to Sailing Instructions No.4

Add new course 26

Course 26

15.3 nm approx.

COURSE MARK	MARK DESCRIPTION	REQUIRED SIDE
Starting line	Dent Passage in a northerly direction	
Denman Island	Approx. S 20° 16.93' E 148° 50.98'	Starboard
Finishing Line	Dent Passage in a southerly direction	



Denis Thompson
Regatta Director